

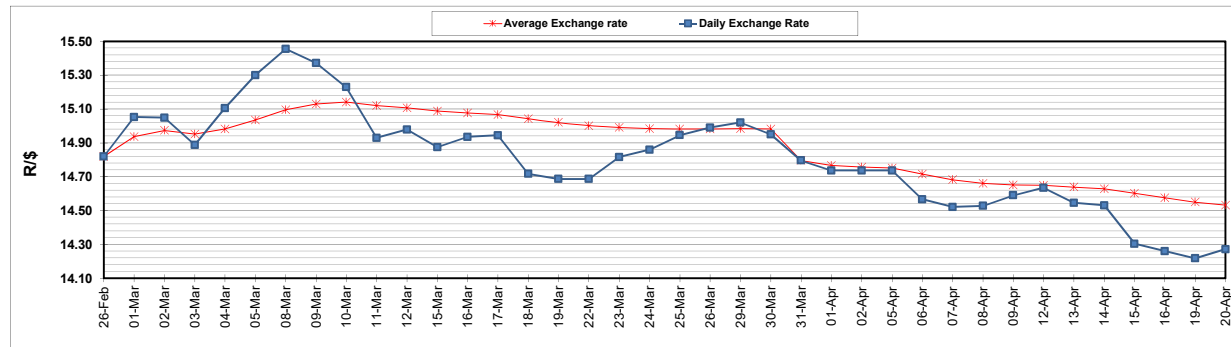
	PETROL 95 ULP	PETROL 93 ULP & LRP	DIESEL 0.05%	DIESEL 0.005%	ILL. PAR.
GAUTENG PUMP PRICE (SA c/l) AS FROM 07/04/2021	1,732.000	1,710.000	-	-	-
WHOLESALE PRICE (SA c/l) AS FROM 07/04/2021	-	-	1,477.620	1,480.020	880.488
SINGLE NATIONAL MAXIMUM RETAIL PRICE	-	-	-	-	1,106.000
BASIC FUEL PRICE - 20/04/2021 (SA c/l)	717.130	703.378	659.340	662.619	647.681
PRESS RELEASE CONTRIBUTION TO BFP 07/04/2021 - 20/04/2021 (SA c/l)	736.170	724.170	690.630	693.030	667.128
UNIT OVER/(UNDER) RECOVERY - 20/04/2021 (SA c/l)	19.040	20.792	31.290	30.411	19.447
AVERAGE BASIC FUEL PRICE 31/03/2021 - 20/04/2021	712.112	697.527	647.380	650.372	631.334
AVERAGE UNIT OVER/(UNDER) RECOVERY 31/03/2021 - 20/04/2021	0.392	4.643	30.916	30.992	24.460

### ANALYSIS MOVEMENT OF AVERAGE OVER/(UNDER) RECOVERY

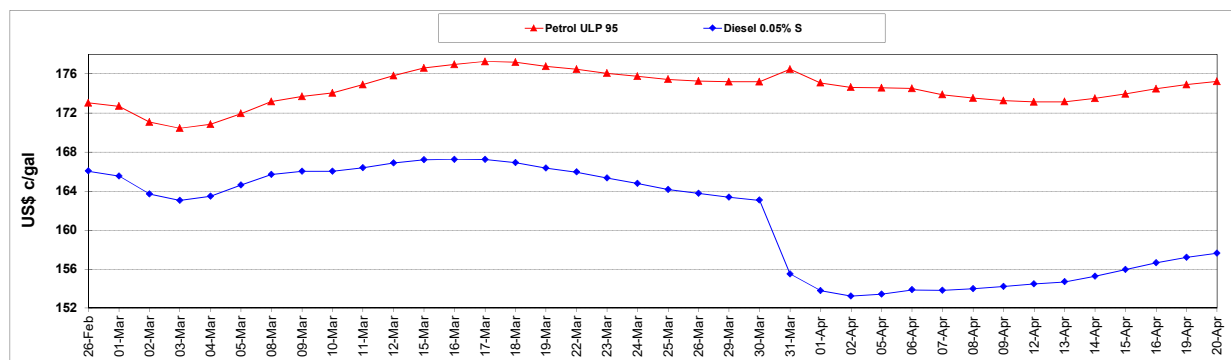
	PETROL 95	PETROL 93	DIESEL 0.05%	DIESEL 0.005%	ILL. PAR.
- MOVEMENT IN INTERNATIONAL PRODUCT PRICES	(21.725)	(17.020)	10.812	10.793	4.854
- MOVEMENT IN EXCHANGE RATE	22.116	21.663	20.105	20.198	19.607
AVERAGE UNIT OVER/(UNDER) RECOVERY 31/03/2021 - 20/04/2021	0.392	4.643	30.916	30.992	24.460

**R/\$ EXCHANGE RATE - (R/\$14.2710 - 20/04/2021)**

### EXCHANGE RATE USED IN BASIC FUEL PRICE



### INTERNATIONAL PRODUCT PRICES OF BASKET USED IN BASIC FUEL PRICE



### BASIC FUEL PRICE IN SA CENTS PER LITRE

